

References

From planning and design to assembly through to ongoing maintenance, we attend to the needs of various cargo and passenger ships and a large number of motor yachts.

Our references include the yachts Siren, Habib, Albacora, Ontario, Limitless, Nahlin, Octopus, A, as well as APL container ships and Premicon river cruise ships, to name just a few.



**C. Ed. Schulte GmbH
Zylinderschloßfabrik**
Friedrichstraße 243
D-42551 Velbert
☎ +49 (0)2051-204-0
☎ +49 (0)2051-204-229
✉ info@ces.eu
www.ces.eu

CEStronics GmbH
Friedrichstraße 243
D-42551 Velbert
☎ +49 (0)2051-204-0
☎ +49 (0)2051-204-229
✉ info@ces-tronics.de

CESlocks GmbH
Mettmann Str. 119
D-42549 Velbert
☎ +49 (0)2051-204-204
☎ +49 (0)2051-204-229
✉ info@ces-locks.de

CESfrance SARL
16 Boulevard Saint Germain
F-75005 Paris
☎ +33 (0)1-44 87 07 56
☎ +33 (0)1-43 07 35 78
✉ info@fr.ces.eu
www.ces.eu/fr

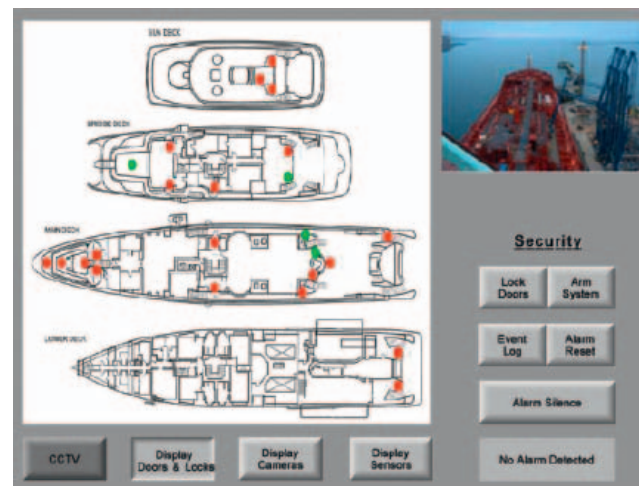
CESnederland B.V.
Lage Brink 9
NL- 7317 BD Apeldoorn
☎ +31 (0)55-52 66 89-0
☎ +31 (0)55-52 66 89-9
✉ info@nl.ces.eu
www.ces.eu/nl

CESitalia srl
V. d. vecchie Fondamenta, 4
Straße d. A. Gründungen 4
I-39044 Egna/ Neumarkt (BZ)
☎ +39 0471-812 294
☎ +39 0471-812 294
✉ info@it.ces.eu
www.ces.eu/it

CESrom srl.
Str. Metalurgistilor 3 D
RO-550137 Sibiu
☎ +40 (0)269-206 00-2
☎ +40 (0)269-206 00-5
✉ info@ro.ces.eu

**UNION - SicherheitsTechnik
Eisen-Jäger Kiel GmbH**
Hamburger Chaussee 192
D-24113 Kiel
☎ +49 (0)431-64923-28
☎ +49 (0)431-64923-49
✉ kpb@eisen-jaeger.de
www.eisen-jaeger.de

Radio Koch
Marine Elektronik GmbH
Dorfstrasse 46
D-24790 Schacht Audorf
☎ +49 (4331) 91239
☎ +49 (4331) 93161
✉ info@radiokoch.de
www.radiokoch.de



Safe Ships and Harbours

**Security on yachts, passenger
and cargo ships**



Better safe than sorry with CES

Step up your protection against current threats such as piracy. Combine your access control with sensor mats and surveillance cameras. All of these smart components act in concert and can be controlled and monitored with a uniform software program. Upon request, even from an onshore location.

CES as a manufacturer of high-quality mechanical locking systems and electronic security technology, together with Eisen-Jäger, Kiel, a ship chandler for security and locking engineering with many years of experience, and Radio Koch Marine Elektronik, a specialist in networked security engineering for marine applications, will fulfil your wishes for security and convenience onboard of ships of all types.



Security pur

Protect your ship against unauthorized access. Enjoy full control over your access system with mechanically secure and centrally controlled components. The PoE-capable components permit simple and reliable integration and allow you to monitor and control access via the ship's own network.

CEMO components combine the highest level of mechanical security with the benefits and the flexibility offered by advanced network technology. With PoE, also integration in existing structures is simple. The wiring effort and thus also the retrofitting costs are reduced to a minimum.



Hands-free access

Doors close and open automatically thanks to the integration of innovative contactless access control and automated locking engineering. With CEMO and OMEGA ACTIVE you keep your hands free so you can focus on the essential.

